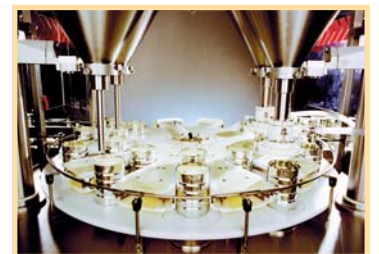
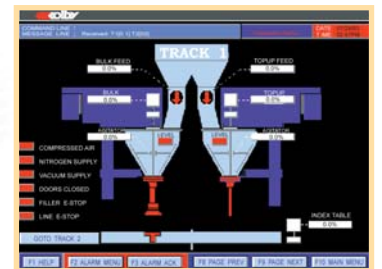




# Rotary Indexing Fillers

## RIF



Colby

“The Colby Rotary Indexing Filler is a medium speed, ultra high accuracy system for filling of powdered products into rigid containers. Each system features reliable PLC control combined with the “bulk/top up” filling technique to achieve unsurpassed levels of accuracy and repeatability across a wide range of container sizes.”

## High Accuracy

The Colby Rotary Indexing Filler (RIF) achieves ultra high accuracy by the use of multiple weigh platforms integrated into a two stage filling system. This combination of static checkweighing and dosing combined with controlled loop feedback to the PLC results in unequalled accuracy and consistency.

## How does it Work?

Empty containers are inducted into the filling machine and checkweighed to establish an exact tare weight. The indexing feed table then clamps the containers and rotates to locate them under the bulk filling heads. When bulk filling is complete the containers are indexed to an intermediate weighing station which enables exact calculation of the remaining powder required to achieve the nominated weight. Containers move on to the “top up” station where the final quantity of powder is dosed. After topping up, the filled containers are passed to the final checkweighing platform where any under or over weight containers can be detected and rejected prior to discharge.

## Benefits

High accuracy means minimal rejects and reduced powder giveaway for Colby's clients. The proven Auger/ Vacuum filling technique ensures that the Colby RIF achieves good fill rates with excellent compaction of powder into retail containers with low product breakdown. The machine is extremely compact and with it's small footprint requires only minimal production space. Controls are user friendly making adjustments simple and enabling high operating efficiencies to be achieved.

|                                    |  |
|------------------------------------|--|
| <b>Filler Type</b>                 | Indexing - bulk fill & top up                                  |
| <b>Filling Technique</b>           | Auger/vacuum & auger   |
| <b>Diameter Containers Handled</b> | 99mm-198mm   |
| <b>Nominal Throughput</b>          | Up to 65 containers/minute                                     |
| <b>Accuracy (500 gram fill)</b>    | Less than 1 gram at 1 standard deviation (depending on powder) |
| <b>Construction</b>                | Sanitary 3A contact parts                                      |
| <b>Change Over</b>                 | Tool free  |
| <b>PLC</b>                         | Allen Bradley, Omron   |
| <b>Operator Interface</b>          | CITECT, Wonderware   |
| <b>Options</b>                     | Pregassing   |

*All performance data achieved under test conditions with standard test materials  
All specifications and dimensions subject to revision without notice.*



## Process Engineering

GEA Colby Pty Ltd  
328 High Street · Chatswood · Sydney · NSW 2067 · AUSTRALIA  
Tel: +61 2 9932 2800 · Fax: +61 2 9932 2801  
[www.colbypowder.com](http://www.colbypowder.com)

GEA Process Engineering Nederland BV  
Munsterstraat 5 · 7418 EV · Deventer · Netherlands · EUROPE  
Tel: +31 570 66 33 66 · Fax: +31 570 66 33 77  
[www.gea-pen.nl](http://www.gea-pen.nl)

GEA Process Engineering Inc.  
1600 O'Keefe Road · Hudson · Wisconsin 54016 · USA  
Tel: +1 715 386 9371 · Fax: +1 715 386 9376  
[www.niroinc.com](http://www.niroinc.com)